

PROVINCETOWN, MASSACHUSETTS

AL-5313 (FAA)

NDB PVC	APP CRS	Rwy Idg	3500
389	247°	TDZE	9
		Apt Elev	9

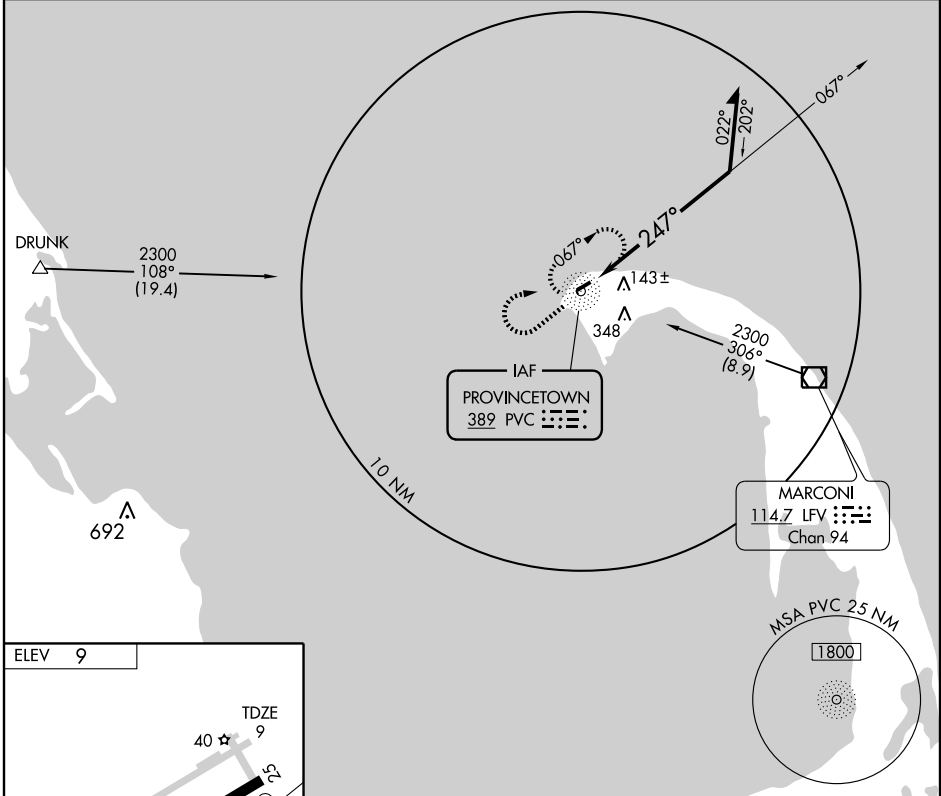
NDB RWY 25

PROVINCETOWN MUNI (PVC)

▼ If local altimeter setting not received, use Hyannis altimeter setting and increase all MDAs 80 feet.

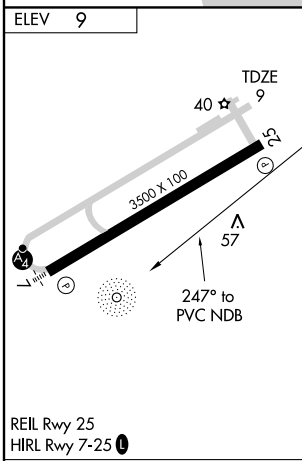
MISSED APPROACH: Climb to 800 then climbing right turn to 2300 direct PVC NDB and hold.

AWOS-3 119.025	CAPE APP CON ★ 118.2	CLNC DEL 120.65	UNICOM 122.8 (CTAF)	122.85 ①
--------------------------	--------------------------------	---------------------------	-------------------------------	-----------------

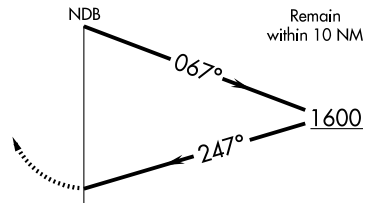
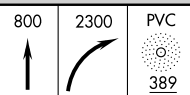


NE-1, 31 JUL 2008 to 28 AUG 2008

NE-1, 31 JUL 2008 to 28 AUG 2008



REIL Rwy 25
HIRL Rwy 7-25 ①



	CATEGORY				
	A	B	C	D	
Knots	60	90	120	150	180
Min:Sec					
S-25	500-1	491 (500-1)		NA	
CIRCLING	500-1	491 (500-1)		NA	

PROVINCETOWN, MASSACHUSETTS
Amdt 2A 07214

42°04'N - 70°13'W

PROVINCETOWN MUNI (PVC) NDB RWY 25